

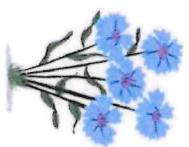
# K51 Autumn 1 Science Vocabulary

| Key Vocabulary | Definition                                                                           |
|----------------|--------------------------------------------------------------------------------------|
| Trunk          | The main woody stem of a tree.                                                       |
| Living         | Something that need essential things to stay alive: air, water and food.             |
| wild           | Something living or growing in the natural environment that isn't grown by a person. |
| seedling       | A young plant grown from a seed.                                                     |
| evergreen tree | A tree which keeps its green leaves all year round.                                  |
| deciduous tree | A deciduous tree loses its leaves each year.                                         |
| reproduce      | To produce another living thing of the same kind.                                    |
| germination    | Is the process where seeds grow into plants.                                         |

## wild flowers



BUTTERCUP



CORNFLOWER



CHAMOMILE



FOXGLOVE



POPPY



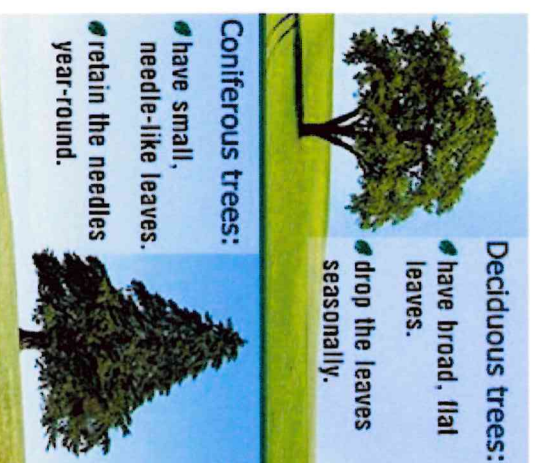
YELLOW PINE TREES

## Plants Key Questions

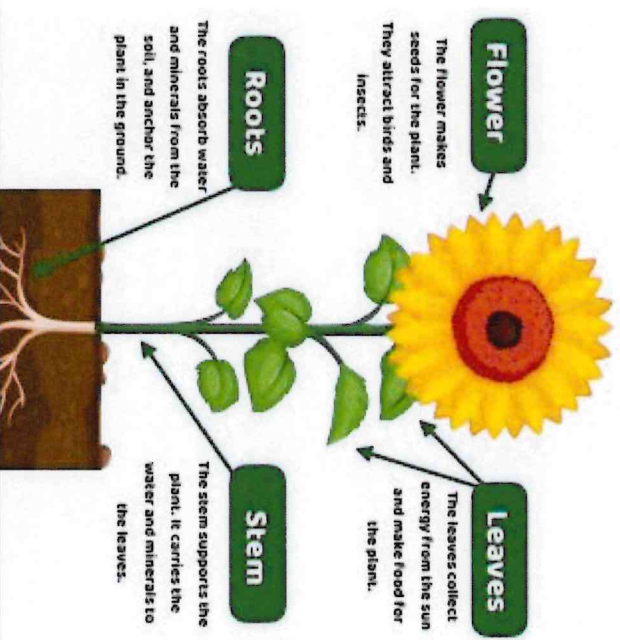
What are the parts of a plant?

Can you identify different weeds and garden plants?

How does a seed grow?



## Parts of a Plant



### Key Facts

|                                                                                                                |
|----------------------------------------------------------------------------------------------------------------|
| Plants are made up of roots, leaves and a stem. Most plants have flowers.                                      |
| If wild plants grow where they are not wanted they are called weeds.                                           |
| Gardens are where people grow plants because of how they look or smell. Some people grow plants to eat.        |
| Trees have a trunk instead of a stem. Leaves grow on branches.                                                 |
| Evergreen trees keep their leaves all year round, even in winter. Deciduous trees lose their leaves each year. |
| Plants produce seeds or bulbs, which grow into new plants.                                                     |
| Seeds germinate and grow into seedlings. These then grow into plants.                                          |



## Vocabulary

| Key Vocabulary    | Definition                                                                                                                                 |
|-------------------|--------------------------------------------------------------------------------------------------------------------------------------------|
| Capital           | The city or town that functions as the seat of government and administrative centre of a country or region.                                |
| United Kingdom    | Four countries: England, Scotland, Wales and Northern Ireland joined together to make up the island of Great Britain and Northern Ireland. |
| Human features    | Things that are made or built by humans                                                                                                    |
| Physical features | Natural things that exist like seas, mountains and rivers. They would be here even if there were no people around.                         |

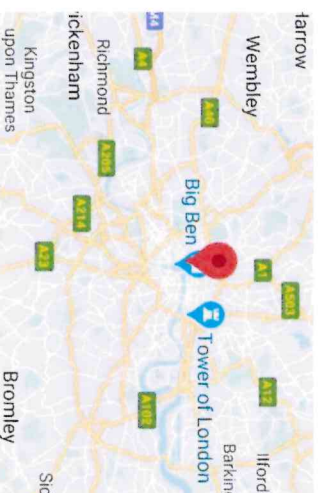
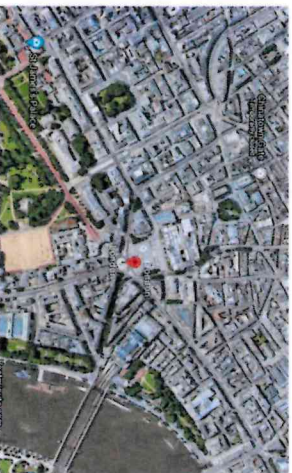
## Home Sweet Home Key Questions

Where am I in the world?

Why are maps important?

Which country would you rather live in? Why?

## Fieldwork



### Key Facts

The United Kingdom formed in 1922 when the republic of Ireland left.

The UK is made up of the island Great Island and surrounded by water: the North Sea, the Irish Sea, the English Channel and the Atlantic Ocean

The Union Jack is a combination of the patron saints of England, Ireland and Scotland. Wales is not represented because it was part of England when the flag was designed.

The summer Olympic Games have been held in London on 3 occasions: 1908, 1948 and 2012.

66.65 million people live in the United Kingdom

The UK is the 80th largest country in the world.

The UK is in Europe, in North-West Europe.

## Population of the countries in the United Kingdom

Northern Ireland (1,881,641)

Wales (3,138,631)

Scotland (5,438,100)

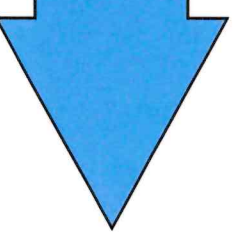
England (55,977,178)

Belfast (280,211)

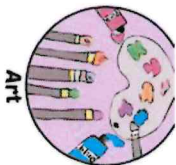
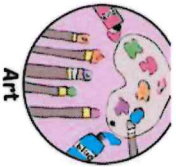
Cardiff (335,145)

Edinburgh (482,005)

London (8,908,081)







# Knowledge Organiser - Self Portraits

## Key Questions

## Key Artist

Picasso



## Vocabulary

| Key Vocabulary  | Definition                                                                                                                         |
|-----------------|------------------------------------------------------------------------------------------------------------------------------------|
| Portrait        | A piece of art work showing a person.                                                                                              |
| Self-portrait   | A portrait that an artist creates of themselves.                                                                                   |
| Symmetry        | the quality of being made up of exactly similar parts facing each other                                                            |
| Facial features | Eyes, nose, mouth, ears, eyebrows, hair                                                                                            |
| Profile         | A representation of something in outline especially : a human head or face represented or seen in a side view                      |
| Size            | How big something is                                                                                                               |
| Abstract        | Art that does not attempt to represent external reality, but rather seeks to achieve its effect using shapes, colours, and texture |
| Realistic       | Having or showing a sensible and practical idea of what can be achieved or expected.                                               |
| Half            | Two equal or corresponding parts into which something is or can be divided.                                                        |
| Quarter         | Each of four equal or corresponding parts into which something is or can be divided.                                               |

What are the characteristics of a self-portrait?

Who was Pablo Picasso?  
What features can you see in his self portraits?

What lines can you see?  
Can you describe one of the lines used?

## Work Examples



THE EVOLUTION OF PICASSO'S SELF-PORTRAIT

| Key Facts                                                                                                                                  |
|--------------------------------------------------------------------------------------------------------------------------------------------|
| <b>Born:</b> October 25, 1881 in Málaga, Spain                                                                                             |
| <b>Died:</b> April 8, 1973 in Mougins, France                                                                                              |
| <b>Style/Period:</b> Cubism, Modern Art                                                                                                    |
| <b>Famous works:</b> <i>Self-portraits</i> , <i>The Pipes of Pan</i> , <i>Three Musicians</i> , <i>Guernica</i> , <i>The Weeping Woman</i> |
| <b>Fun Fact:</b> Picasso was baptised with 23 names!                                                                                       |

## Timeline of Artists

